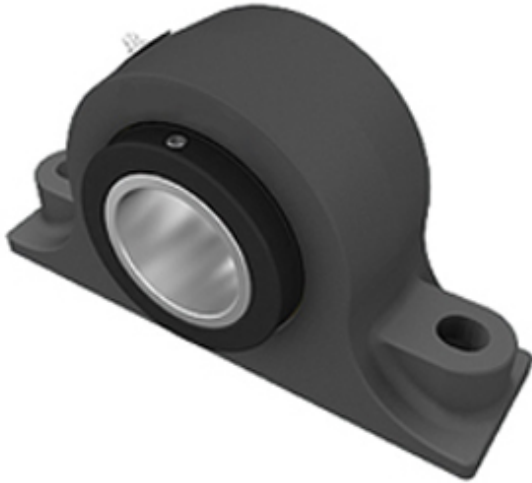




Shenyang Sharjah Bearing Co.,Ltd.

1.25 Inch | 31.75 Millimeter x 2.75 Inch | 69.85 Millimeter x 1.5 Inch | 38.1 Millimeter TIMKEN E-P2B-TRB-1 1/4 Pillow Block Bearings



E-P2B-TRB-1 1/4 Bearing 2D drawings and 3D CAD models

Bearing No. E-P2B-TRB-1 1/4

Category	Pillow Block Bearings
Inventory	0.0
Manufacturer Name	TIMKEN
Minimum Buy Quantity	N/A
Weight	1.953
EAN	0053893606439
Product Group	M06288
Number of Mounting Holes	2
Mounting Method	Concentric Collar
Housing Style	2 Bolt Pillow Block
Rolling Element	Tapered Roller Bearing
Housing Material	Cast Iron
Expansion / Non-expansion	Non-expansion
Mounting Bolts	1/2 Inch
Relubricatable	Yes
Seals	Double Lip Radial
Housing Configuration	1 Piece Solid
Inch - Metric	Inch
Other Features	Double Row Wide Inner Race With Set Screw
Long Description	2 Bolt Pillow Block; 1-1/4" Bore; 1-1/2" Base to Center Height; Concentric Collar Mount; Tapered Roller Bearing; 4-3/4" Minimum Bolt Spacing; 4-13/16" Bolt Spacing Maximum; Relubri



Shenyang Sharjah Bearing Co.,Ltd.

Category	Pillow Block
UNSPSC	31171511
Harmonized Tariff Code	8483.20.40.80
Noun	Bearing
Keyword String	Pillow Block
Manufacturer URL	http://www.timken.com
Manufacturer Item Number	E-P2B-TRB-1 1/4
Weight / LBS	4
Bolt Spacing Minimum	4.75 Inch 120.65Millimeter
B	1.5 Inch 38.1 Millimeter
Nominal Bolt Center to Center	4.8 Inch 121 Millimeter
Bolt Spacing Maximum	4.813 Inch 122.25Millimeter
D	2.75 Inch 69.85 Millimeter
Actual Bolt Center to Center	0 Inch 0Millimeter
d	1.25 Inch 31.75 Millimeter
Shaft Size	1.25 in
Shaft Size Type	Imperial
Weight	4.0 lb
UPC Code	053893606439
Dimension B	2-3/4 in
Dimension L	6 in
Dimension A	1-7/8 in
Dimension J Min.	4-3/4 in
Dimension J Max.	4-13/16 in
Bolt Diameter	1/2 in
Dimension N	9/16 in
Dimension N ₁	19/32 in
Dimension H ₁	7/8 in
Dimension H ₂	3 in
Dimension d ₁	2-1/4 in



Shenyang Sharjah Bearing Co.,Ltd.

Dimension H	1-1/2 in
e	0.49
X (if $F_a/F_r \leq e$)	0.87
Y (if $F_a/F_r \leq e$)	1.77
X (if $F_a/F_r > e$)	0.7
Y (if $F_a/F_r > e$)	2.14
K Factor	1.23
C_{90} Dynamic Load Rating ¹	3810 lb
C_0 Static Load Rating	15760 lb
F_{a-max} Maximum Permissible Thrust Load ²	2000 lb
F_{r-max} Maximum Allowable Slip Fit Radial Load ³	3100 lb
Max. Speed ⁴	4490 rpm
Note	Note: All units have a 1/8 pipe thread grease fitting The Maximum Permissible Thrust Load applies to conditions of slip fit with set screw mounting or in applications where a large moment loading occur