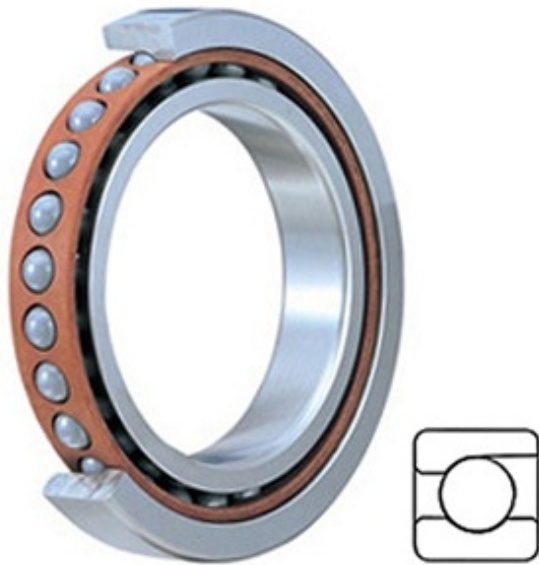




## Shenyang Sharjah Bearing Co.,Ltd.



7904CYU/GLP4 Bearing 2D drawings and 3D CAD models

0.787 Inch | 20 Millimeter x 1.457 Inch | 37 Millimeter x 0.354 Inch | 9 Millimeter NACHI 7904CYU/GLP4 Precision Ball Bearings

Bearing No. 7904CYU/GLP4

Category	Precision Ball Bearings
Inventory	0.0
Manufacturer Name	NACHI
Minimum Buy Quantity	N/A
Weight	0.036
EAN	4991893852837
Product Group	B04270
Enclosure	Open
Precision Class	ABEC 7   ISO P4
Material - Ball	Steel
Number of Bearings	1 (Single)
Contact Angle	15 Degree
Preload	Light
Raceway Style	1 Rib Outer Ring
Cage Material	Polyamide
Rolling Element	Ball Bearing
Mounting Arrangement	Universal
Flush Ground	Yes
Inch - Metric	Metric
Other Features	Single Row   Angular Contact
Long Description	20MM Bore; 37MM Outside Diameter; 9MM Width; Open Enclosure; ABEC 7   ISO P4 Precision; Steel Ball Material; 1



## Shenyang Sharjah Bearing Co.,Ltd.

	(Single) Bearing; 15 Degree Contact Angle; Polyamide Cage Material; 1 Rib Outer Ring Race
Category	Precision Ball Bearings
UNSPSC	31171531
Harmonized Tariff Code	8482.10.50.28
Noun	Bearing
Keyword String	Ball Angular Contact
Manufacturer URL	<a href="http://www.nachi.com">http://www.nachi.com</a>
Weight / LBS	0.07716
d	0.787 Inch   20 Millimeter
D	1.457 Inch   37 Millimeter
B	0.354 Inch   9 Millimeter